

# YEAR REPORT 2023-2024

The Hague Center for Global Governance,  
Innovation and Emergence



# THC YEAR REPORT 2024

## CONTENTS

<b>HISTORY</b>	<b>6</b>
<b>THE WORK THC DOES</b>	<b>6</b>
<b>THC CO-CREATIVE COLLECTIVE</b>	<b>7</b>
<b>GLOBAL GOVERNANCE</b>	<b>8</b>
STRATEGIC CONNECTING AND CAPI	8
SDI LEADERSHIP AND MESHWORKING	9
EVOLUTIONARY LEADERS CIRCLE	9
INNER DEVELOPMENT GOALS	10
WELLBEING DEVELOPMENT GOALS	10
THE CLUB OF BUDAPEST	11
NEW COB MEMBER CLUBS	11
INTEGRAL CITY	11
LIVING CITIES EARTH	12
IEC 2022	12
SIEUK	13
CARE FIRST AND THE SCHOOL OF CARE	13
PERSONAL KEY	13
TEAM DEVELOPMENT	13
WORLD UNITY WEEK AND PEACE WEEK 2022-23	14
BRIDGING CONTINENTS	16
MANNAHATTA PROJECT	17
<b>INNOVATION</b>	<b>18</b>
CITY OF HOPE BAKERY	18
PEACEDAY YOUTH ASSEMBLY	18
ART OF INTERGENERATIONAL INTERACTION	18
WHOLE SYSTEMS DESIGN: INQUIRIES IN THE KNOWING FIELD	19
SPIRIT OF CANADA DIALOGUES PROJECT	19
LOVE ORGANIZED	19
METAAL KATHEDRAAL / ECOLOGICAL SOCIETY NETHERLANDS	21
UTRECHT WATER BIENNALE 2022	21
COHERE+	22
COHERENET	22
LOVE TO	23



<b>EMERGENCE</b>	24
ECOINTENTION - EUROPE ENERGETICS PROJECT	24
DAY OF MINDFULNESS AND COMPASSION	24
WHOLEWORLD-VIEW	25
UNITIVE NARRATIVE	26
A RADICAL GUIDE TO REALITY	26
LOVING CLASSROOM	26
STORY OF THE NEW PARADIGM	26
THC EGYPT	27
THE HAGUE CENTER FOR FIELD INQUIRY	27
BRINGING COLLECTIVE CONSTELLATIONS ALIVE: DYNAMIC CONVERSATIONS WITH FACILITATORS OF COLLECTIVE CONSTELLATIONS	28
THE SCIENTIFIC AND MEDICAL NETWORK CONFERENCE	29
HOLOMOVEMENT	29
<b>ROLE OF THE BOARD</b>	30



## INTRODUCTION

# HISTORY

The Hague Center for Global Governance, Innovation and Emergence (THC) was founded in 2008 by the Center for Human Emergence (CHE) with Peter Merry and Anne-Marie Voorhoeve as initiators, and became its own foundation with ANBI status in 2014. The aim was to conduct internationally oriented meshwork projects under this name. THC builds on the ideas and years of experience in doing meshwork projects with different partners.

## THE WORK THC DOES

*We are an organisation and co-creative collective  
serving the emergence of a conscious, harmonic humanity.*

*We innovate heart-centered planetary governance  
with all domains of life, visible and invisible.*

THC exists to help align necessary resources for the current human and planetary transition. This transition is, in its essence, about moving from separation and polarization, towards coherence and complementarity. This same transition is playing itself out across all sectors — ecology, economy, and governance, to name a few key ones.

The Hague Center focuses on international societal challenges whose complexity requires collaboration between multiple stakeholders. We provide insight into the current condition, and co-design and facilitate transition processes towards better futures

The Hague Center operates on a global scale, including a network of centers (Europe, Egypt, South Africa, Canada and USA ) and partnering with global-scale organizations and networks such as WholeWorld-View, World Unity Week, Evolutionary Leaders Circle, the Club of Budapest, Living Cities Earth, Integral City, Unity Earth, SINE, Co-creating Europe, Help2Heal Europe, Peace Day Youth Assembly, Four Worlds International.

THC serves the global community through large-scale projects and local communities through projects designed to meet local challenges.

The foundation has as its aim:

- To be co-creators from the heart for planetary enlightenment
- To co-create practices for global governance, innovation and emergence in order to weave the fabric of society into one social body with all its diversity in coherence.
- To be process guides helping national and international institutions solve complex challenges such as how to reach their Sustainable Development Goals, coming from a wholistic, integral worldview and using the power of collaboration and multiple intelligences including body and spiritual intelligence.





THC seeks to achieve its purpose by:

- Initiating our own projects (for example: School of Social Alchemy, Conscious Witness Project, Together Mabaad, Bridging Continents)
- Accepting commissioned projects
- Establishing strategic connections
- Providing training, conducting coaching and designing such projects
- Arranging speakers for national and international conferences
- Participating in, cooperate with, execute governance/administration
- Providing services to other companies and legal entities, who in any way contribute to our purpose.

All THC projects are interconnected and have multiple dimensions. Together they contribute to the development of 'global governance, innovation and emergence'

## THC CO-CREATIVE COLLECTIVE

Anne-Marie Voorhoeve  
 Anita Floris  
 Mona Rabie  
 Diana Claire Douglas  
 Pieter Wackers  
 Kara Stonehouse  
 Marianne de Jager  
 Aansan Yeh  
 Natascha van den Ban  
 Adrian Iacobus  
 Anna Freedman  
 Haseena Patel  
 Shweta Shrivastav  
 Alicia Stammer



## PROJECTS 2023-2024

## GLOBAL GOVERNANCE

## STRATEGIC CONNECTING AND CAPI

Establishing strategic connections, which serve the purpose of THC is an essential part of our work. Important aspects of that are the methodologies of SDi Spiral Dynamics integral and CAPI: Coalescing Authority, Influence and Power (Ichak Adizez, Don Beck).

In the different strategic reasons for making connections there are two movements:

- From the inside out - what is needed for our own individual and collective consciousness growth to be available for our work, including participation in Communities of Practice;
- From the outside in - aimed at entering into strategic connections for existing and new policy developments in different sectors, between sectors and at different locations.

THC members often fulfill an initiating, leading, facilitating or actively participating role in different networks and organisations that work towards consciousness development.

THC is involved in a large number of projects, networks and networks of networks, including

- WholeWorld-View
- Evolutionary Leaders Circle
- World Unity Week
- Cohere+
- SINE network
- Integral City
- Center for Human Emergence
- The Club of Budapest
- Co-Creating Europe
- Hopemakers Network
- NETSPIRIT
- Together/Mabaad
- Peace Day Youth Assembly
- Humanity Rising
- Care First
- Loving Classroom
- NOW Assembly
- Global Education Futures

- Holomovement
- Purpose Earth
- One Humanity Institute
- UK Spirituality in Education Alliance (SIEUK)
- We the world
- The Scientific and Medical Network (SMN)
- Codes for a Healthy Earth
- Club van Boedapest Nederland
- Bridging Continents
- HOPE community
- Divine Mother's Love
- GAIA Global AI Association (think tank)

As a result, THC can be a connecting link between these different initiatives, and help them to reinforce, complement and learn from each other, so that what they do is aligned with a shared and overarching goal.

Partners include:

- City Transformers
- Het Veerhuis
- Greenheart
- MetaalKathedraal
- The Laszlo Institute of New Paradigm Research
- Gaianet
- Holomovement
- Sarah McCrum
- Love To
- Brand Earth
- PYM
- PYMWYMIC
- Hanson Robotics
- Life Itself
- Emerge
- IFIS
- Symphonics
- DIIF foundation
- Four Worlds International
- Leave No Girl Behind International
- Dolphin Embassy
- Unity Earth



## SDI LEADERSHIP AND MESHWORKING

THC's expertise lies, among other things, in the field of Spiral Dynamics integral, and in bringing organizations and people together and motivating them to work for a higher purpose. A unique expertise of THC lies in the design and facilitation of multi-stakeholder projects. The term we use for this is Meshworking, introduced by Dr. Don Beck.

Meshworking is both a vision and a method. In essence, Meshworking is about the way in which we bring a variety of stakeholders together behind a common, higher goal, so that real progress can be made in solving complex issues.

Unlike in a network where the connections between the partners are focused on their own interests, each partner's own interests are placed within the context of the common interest. THC fulfills the role of 'whole holder' - the person who gives the example of how cooperation can be based on social intentions. THCs often fulfill this role on a (partly) voluntary basis. This also ensures a large degree of independence.

## EVOLUTIONARY LEADERS CIRCLE

Anne-Marie Voorhoeve has been active in the [Evolutionary Leaders Circle](#) since she was nominated and elected in 2019, joining other leaders such as Ervin Laszlo, Jude Currivan, Don Beck, Deepak Chopra, and Jean Houston. In 2022 Kara Stonehouse was elected as well, and she participates in the Artists Catalysing Evolution Synergy Circle.

The Evolutionary Leaders Circle is a group of thought leaders from diverse disciplines who come together in synergy to help support a shift in consciousness. The Source of Synergy Foundation shares the work of the members in the circle with the public in the spirit of open

inquiry through social media, various educational opportunities and lively exchange.

Anne-Marie is a member of the Evolutionary Leaders Council for the Source of Synergy Foundation, as well as the nominations committee for new Evolutionary Leaders.

She is a member of the Synergy Circles:

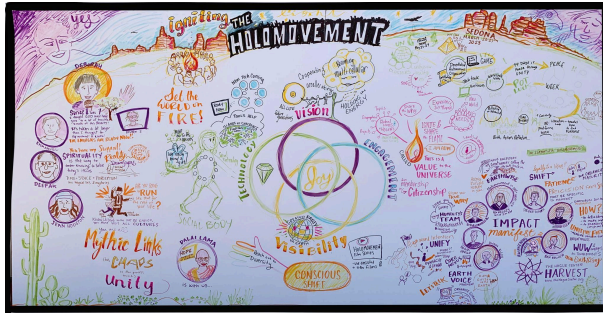
- Conscious Business Synergy Circle
- [SDG Thought Leaders Circle](#)
- unitive narrative Synergy Circle
- UNITY & PEACE Synergy Circle

The Evolutionary Leaders management encourages and services members to organise Synergy Circle gatherings as part of its mandate to expand synergy among like-minded people seeking to serve the highest good. A number of Synergy Circles have been birthed by Evolutionary Leaders choosing to come together among areas of common interest or in local communities.

Anne-Marie Voorhoeve, Kara Stonehouse and Adrian Iacobus partnered with the Source of Synergy foundation to facilitate a stream in the Holomovement Sedona gathering. We made a significant contribution to the field in the Engagement Track.



Under the brand THC Harvest, we contributed through graphic recording by Kara Stonehouse. When Kara placed JOY in the center of the Holomovement circles, it was noticed and amplified by Julie Krull as the essence energizing the movement.



## INNER DEVELOPMENT GOALS

The Inner Development Goals (IDG) are a professionally organized movement of mostly academics and business coach consultants, encouraging leaders to improve their inner capacities in order to better collaborate and plan to meet the Sustainable Development Goals.

THC attended the IDG summit in Stockholm Sweden in 2023 as part of the Cohere+ research and event deliverables. Kara Stonehouse provided graphic recording services in the Global Collaboration stream and presented a stirring summary poem at the end. <https://youtu.be/zEJw5AG8nzA>

With Emerge and IFIS (Institute of Integral Studies Germany) we facilitated a post-conference sense-making session using world cafe style dialogue which was very touching for the participants. We included a sense-maker story capture activity and artful collective synthesis. We sensed some tensions in the coherence of the movement and helped our Netherlands based IDG partners frame their thinking in an organizational developmental mindset.

THC board member Marianne De Jager and colleague Erica Harpe initiated IDG Hub and Dialogues in NL to empower participants with the skills, values and mindset necessary to lead with compassion, integrity and innovation

## WELLBEING DEVELOPMENT GOALS

The [Wellbeing Development Goals](#) Initiative mandate is to safeguard, nourish and strengthen the universal values of humanity. To enable the conditions for virtues to be accessed, cultivated and harnessed for working, living and being. To act across all sectors (politics, finance, education, health, environment, technology and more) regionally, nationally and internationally in fulfilling this mandate.

Our consultation and research phase brings together diverse groups at the House of Lords, London to interrogate wellbeing and the values and virtues of humanity. From examining compassion, empathy, gratitude, mindfulness and courage to applying a taxonomy of wellbeing indicators within government, we act at the intersection of wellbeing, governance and community.

The Wellbeing Society Roundtable we convened the WDGs Initiative Steering Group and fifteen experts across wellbeing to together identify and share how we might enable a wellbeing society ecosystem to have profound and positive societal impact and together manifest wellbeing transformation at scale. The connections, sharings and leverage points accessed across this initial group anchor Wellbeing Development moving forwards.

We held a week of continuing consultation with groups of key stakeholders at the House of Lords around identifying pieces of the puzzle, what can support these pieces to flourish, identifying quick wins and added value through collaboration and exploring how we might enable breakthroughs through a creative process. We took into account UK 'life conditions' - political unrest, call for strikes, and



selected the area of Politics from the Meshwork Map.

## THE CLUB OF BUDAPEST

Anne-Marie Voorhoeve fulfills the position of Chief Creative Director of The Club of Budapest. In this capacity she leads the COB Projects Office, in which Pieter Wackers also works on behalf of THC. In addition, Anne-Marie is director of The Club of Budapest Netherlands.

The [Club of Budapest](#) (COB) is an international think tank and 'action tank', founded by the Hungarian systems philosopher Ervin László, with headquarters in Budapest and 25 national and regional departments spread over 6 continents.

The mission of The Club of Budapest is to be a catalyst for the transition to a sustainable world, by promoting the emergence of planetary consciousness, connecting generations and cultures, integrating spirituality, science and the arts, and supporting learning communities worldwide.

## INTEGRAL CITY

For many years, THC has been deeply connected to [Integral City](#), an international meshwork organization founded by Marilyn Hamilton.

Anne-Marie Voorhoeve, Diana Claire Douglas and Pieter Wackers are part of the Integral City core team.

Integral City is a global constellation of communities of practice that nurtures cities as human hives. Launched in 2005, and now in Canada, USA, UK, Netherlands, Spain, Russia, Mexico, Australia and South Africa, Integral City connects the 4 Voices of the city to energize relationships, unify visions and develop eco-regional resilience strategies for hive wellbeing. Through placecaring and placemaking it inspires a Planet of Integral

Cities as living, integral, evolutionary human systems, to become Gaia's Reflective Organs.

Pieter is part of Integral City's faculty, and teaches Integral City Beyond Smart, together with Marilyn Hamilton.

Diana Claire was honored as Integral City Meshworker of the year 2018, and Anne-Marie was Meshworker of the year in 2019.

In recent years, we have been continuing our collaboration with Integral City and Marilyn Hamilton mostly in Living Cities Earth.

## LIVING CITIES EARTH

In 2022, Integral City, THC, and other partners like Living Cities Russia and Global Education Futures, founded a new initiative called [Living Cities Earth](#) (LCE), a global meshwork of creative initiatives and projects, key developmental institutions and evolutionary leaders.

Founding meetings were held at Anne-Marie's home in Vreeland and in Amsterdam, with Anne-Marie, Pieter, and Diana Claire (over zoom) joining as co-founders. Kara Stonehouse later joined the fundraising team coordinating grant writing activities.

The central question for LCE:

'As humans, we are intricately connected to the evolutionary web of life. In our modern, complex world what does it mean to "human well"?''

In LCE we aim to nurture our cities and ecoregions as healthy, happy, caring homes in harmony with each other and nature, across four key dimensions: person, people, places, and planet. Our cities and bioregions survive and thrive honouring all life on our ONE planet.

We do that by providing people with the tools and resources to care for the cities they love.

We offer an inspiring vision, empowering knowledge and practical solutions, tools and methodologies, create engaging learning and integral development opportunities, facilitate networking and nurture a culture of collective





action. And we create a global impact community where local and global leaders of positive change and innovative institutional partners could meet, unite, thrive, combine resources and co-create to nurture life in 10.000 living cities.

LCE has grown fast and is still growing and very active, with THC'ers in the management team and many other workgroups.

## SIEUK

SIEUK brings together different partners that are working in schools in the UK to promote an understanding of spirituality within schools and to create learning environments that better promote and nurture the inner life of students and teachers.

## CARE FIRST AND THE SCHOOL OF CARE

Pieter Wackers is part of the core team of [Care First](#).

In a Care First World the well-being of people and planet comes first. Money is used to make well-being possible. Everyone can provide for their basic human needs and develop themselves. We honour and preserve the eco-systems of our beautiful Earth..

In 2023 and 2024 Pieter's main focus has been on developing the [School of Care](#) and the Personal Key process.

The School of Care is a 'place' to strengthen the experience of our true selves and life purpose and activate our heart intelligence – to get to know ourselves from our core, learn to live and work from the heart and develop the gifts we bring.

In the School of Care you are supported in making the shift from a Money First to a Care First attitude. (Self Care, Self Development, Transformation, Action).

We work together to learn to sustain ourselves financially in this world and collaborate on

creating the economy and financial world we wish for.

## PERSONAL KEY

As part of the School of Care, Care First has developed a process for people to find their [Personal Key](#).

A personal key is how someone's essence expresses itself. The activity of our heart by which we intelligently respond to our environment and fulfill our life purpose. Our personal key describes the unique way by which we contribute to our world community.

It has been fascinating to see people give words to this part of themselves that has always been there, but not always known. It is strongly connected with the essence of who we are. But where our essence is static, the personal key describes the activity of that essence - the dynamics of that essential Self, which we also experience as the unique activity of our heart's intelligence.

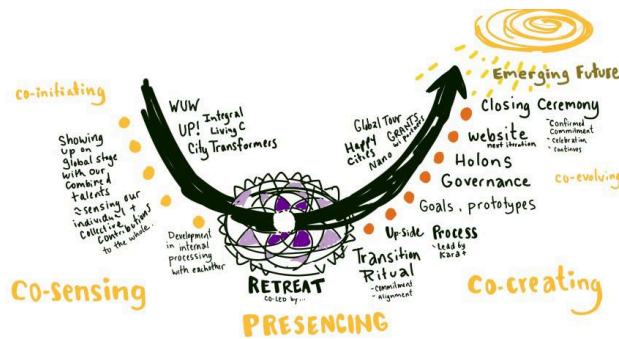
As of December 2024 there are 9 Personal Key facilitators, and we have developed a training to allow more people to learn this skill.

## TEAM DEVELOPMENT

We continue an ongoing internal governance process to define our own heart-centered governance practices. We hosted a virtual team retreat and developed small project teams to define our governance structures. We are transitioning to a more formalized version of our governance practices which we sense will be of value to share with groups aligned with our vision and values.

We used deep listening processes such as Life-Alignment, ADIEWA and Systemic Constellation work. Anne-Marie hosted and Diana Claire facilitated several Systemic Constellations. In 2023 the themes were: "Listening to THC's compass to fulfill THC's evolutionary purpose and be fully resourced, in service of the Whole." "Anne-Marie's roles + finding a new Chair."





In 2023 and 2024, we have been slowly developing the website further, practicing our holon structures and using miro to align our operations strategies.

## WORLD UNITY WEEK AND PEACE WEEK 2023-24

The [World Unity Week](#) online convergence of hundreds of peace builders and change agents around the world creates a space for global connection and nourishment. These convergences continue throughout the year at the changing of the seasons with Peace Weekend in September, Enlightening our Way in December and Beloved Community in early Spring.

We are offering our Journey of the Magic Canoe to this process, where we can all paddle together to get us to ONE WORLD. We have committed to this practice until 2030. The mission is to see a sustainably peaceful world emerging.



We work closely with UNITY EARTH, Purpose Earth and the SINE network and are co-producer of World Unity Week which attracts millions of views on social media and brings together approximately 600 globally

diverse co-creators to offer hundreds of free events. The conversations and ideas shared in these convergences are the sparks of the global fire we are tending. We see glimmers of the future we are capable of building together.

Anne-Marie Voorhoeve is a core contributor and strategic connector in this project.

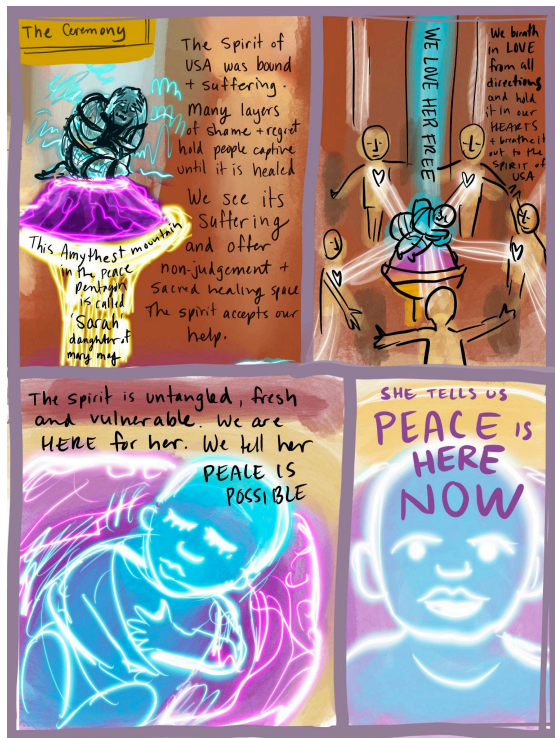
Kara Stonehouse co-stewarded a new convergence room called Healing for Rising in 2023, with several European colleagues, focusing on spiritual healing and dialogue for thriving individuals and collectives.



This group created a mission in the 99 days of Peace through Unity - offering ceremonies on the new moons and full moons from June to September. The mission was called **Ceremonies for Inner World Peace** and tackled global challenges such as caring for the Soul of the USA, and the energy of Domination in our world.







The Meshworking Cities and EcoRegions room continued with presentations from Living Cities Earth network who grew out of the Happy Cities lab work we did in the previous years.



Kara continued to graphically harvest for the Peace Week events.



Diana-Claire Douglas held the Unitive Justice room in December 2023 Enlightening Our Way Together, exploring what justice becomes in a unitive world view. This led to several constellations with Jude Currivan and the Wholeworld-View team. Kara partnered with Felipe Leall of Gaia Commons to present Love Organized - Grounded Strategies for Transformative Change. This session was well received by David Gershon and others.

[https://youtu.be/d16coychoPY?si=FR9P5GIWkr\\_tluhkT](https://youtu.be/d16coychoPY?si=FR9P5GIWkr_tluhkT)



As the World Unity Community of about 600 people connect and co-create the convergences, we are building a strong field of coherence. We are preparing to be able to work together in more concrete ways.





## BRIDGING CONTINENTS

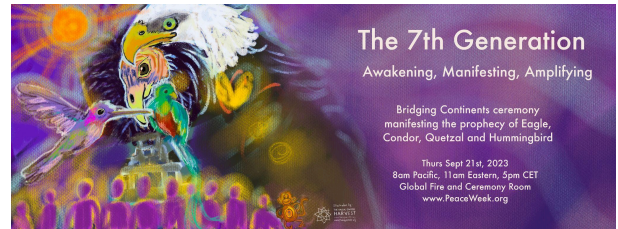
One of the priorities of The Hague Center for Global Governance, Innovation and Emergence (THC) is to support and connect indigenous leaders and movements across the Americas. Our aim is to ignite a global indigenous and allied-led movement to unite humanity and restore Mother Earth

Anne-Marie Voorhoeve has been invited as space holder, deep listener and bridge of colonial and indigenous worldviews, to partner with Chief Phil Lane Junior and Four Worlds International. There is a beautiful prophecy that when the Condor, Eagle and Quetzal and Hummingbird— four birds found in the Americas — reunite, a spiritually-based movement, led by Indigenous Peoples, will ultimately result in a great era of compassion, peace, justice and prosperity that will unite all members of the Human Family.

Anne-Marie brought together a core team now called the Bridging Continents Council, which functions as a meshwork working with emergence and using the practises of Four Worlds International and The Hague Center for Field Inquiry (among others) as part of the compass and guidance for the agenda, process and project development. Anne-Marie, Diana Claire and Rodrigo Martinez Romero from THC, and Adriana Alvarez and Ejna Fleury, bridge continents themselves.

The purpose is to initiate the re-unification of the 7 continents –starting with the Americas, Europe, Africa, Asia and Oceania - with Rainbow Bridges, fulfilling prophecy and manifesting the Prophecy.

Kara Stonehouse and Rodrigo Martinez led a 7th generation ceremony, connecting the younger spiritual generation in an ADIEWA ceremony.



Anne-Marie also established a weekly online gathering that brings together a conscious community consisting of individuals in Europe, UK, Africa and any other country where the timing of the call works. On consulting with this group of individuals in April 2023, Anne-Marie named the weekly call, the Bridging Continents call. In this 60-minute weekly meeting, hosted by Anne-Marie and Haseena Patel, participants bring their individual gifts to the table, and our unity lies in the strength of our diversity.

Through our community, we nurture a space for all BE-ings to find self, growth, belonging, healing and their own sense of alignment, as part of the greater whole as we steward our world into an age of the bridging of all BE-ings for peace and unity.. Our process begins with the ringing of a Tibetan singing bowl, to tune into being in the communal space together, fully present. There is then a check-in from all participants, an emergent theme of discussion in the spirit of spreading higher frequencies to raise the planetary consciousness, sharing of insights and experiences, followed by a check-out with a call to action.

## MANNAHATTA PROJECT

In connection with Bridging Continents, Chief Dwayne Perry of the Lenape Nation in New York, USA, also invited Anne-Marie to represent the Dutch ancestry in Ceremony to shift the story for the future.

The Lenape are the original inhabitants of Manhattan when the Dutch arrived, leading to the colonization of sacred lands. Now we want to shift back to a regenerative world in harmony among people and lands.



Brand Earth with founder Harry Uvegi and Jon Ramer are proposing the Mannahatta Project to use the power of Wall Street and Madison Avenue for transformative change. Anne-Marie has been invited to play a role in the core team of Brand Earth

THC has played a role in advising this council on its governance structure and election process, and in serving as a "conscious witness" to support their work. Kara Stonehouse supports graphic facilitation and connection with the Love Organized strategy and Gaia Commons.



## PROJECTS 2023-2024

## INNOVATION

## CITY OF HOPE BAKERY

THC is a core, active team member of the City of Hope Project with [One Humanity Institute](#).

Anne-Marie Voorhoeve and Adrian Iacobus visited the site and facilitated intensive working sessions to align and document the vision, business plan and development pathway. Anne-Marie secured a major interest loan from a philanthropist to purchase a second building. Anne-Marie connected the project with energetic grounding and Deep Earth Architecture practitioner Wendy Hastrich.

2 million people visit the Auschwitz Memorial sites each year. They often leave the grounds internally shattered. One Humanity Institute's City of Hope will offer them a space of reflection, healing and hope - inspired by a new vision for humanity that honours those who perished while inspiring rising generations to reach for an alternative future that resolves obstacles to global harmony.

A bakery in Oświęcim, gifted by a Jewish family, and an adjacent historical bakery will be turned into a safe and inclusive space for gatherings and exchange around a hot meal or freshly baked bread.

The Bakery-Cafe will include a Learning Center to equip youth as resilient learners with 21st century skills, a Start-up Hub, Co-working Space and Youth Think-tank to co-create a new story for humanity and the world. The Loving World Engineering Institute envisioned by David Geffen of Loving Classrooms Worldwide, will be a founding institution in this hub.

There will also be a Social Media Center, Peace library and Conference Rooms.

OHI (One Humanity institute) envisions the former military buildings to become a City of Hope - a transformative tourist experience that will inspire people to not only never let such an

atrocities happen again, but to find their place in actively building a brighter tomorrow.

## PEACEDAY YOUTH ASSEMBLY

In 2020, THC formed an alliance with other organizations like MasterPeace, AIESEC and CityTransformers to organize a [Global Youth Assembly](#).

Young changemakers from almost 100 cities worldwide came together in a Global Youth Assembly on Peace Day 2020.

In 2021, Young people from Australia to Mexico organized 120 local POP UP PEACE EVENTS, creating the unifying momentum, encouraging them to continue to be the changemakers in their communities.

In 2022..

In 2023..

In 2024 the event was called Peace Camp. On the days around Peace Day, we gathered in Copenhagen to explore how we can create a better future by connecting inner development with outward action.

Peace Camp 2024 brought together AIESEC leaders and UN Youth delegates from across the Nordics, as well as peace activists and elders from across the world.

The event took place on Youth Island, a former sea fortress, now transformed into a sanctuary for young people to pursue their dreams and become part of new communities.



[www.spiritofcanada.org](http://www.spiritofcanada.org)



At sunset on September 21, a peace fire was lit in an abandoned cannon position by Greenlandic Elder Angajoq Nattoralissuaq, who shared songs and stories from the far north. The evening concluded with a livestreamed concert featuring Finnish violinist and ethnomusicologist Tuomas Rounakari, who, together with Angajoq and a group of singers from diverse cultures, performed an old Greenlandic song.

The peace fire burned all night, and the following morning, a sunrise ceremony took place before the young organizers passed the torch to the youth delegates traveling to New York to participate in the UN's Summit of the Future.

## SPIRIT OF CANADA DIALOGUES PROJECT

Kara Stonehouse and Diana-Claire Douglas are core team members of this Canadian volunteer group that meets weekly to create monthly dialogues to practice 'listening beyond division'. In 2023 we did fewer external dialogues and focused on our strategic process as a collective for growth and partnership with Reconciliation Canada and the Museum of Nature in Canada. This did not work out in the end when our core contact decided to leave Reconciliation Canada and our partnership with the Museum of Nature fell through and the team dispersed. Kara is taking the learnings and energy of this project forward to the Love Organized project that is calling her forward.

## LOVE ORGANIZED

[Love Organized](#) is a vision written by Kara Stonehouse from sensing into the collective, of how to get from meta crisis to metamorphosis into a healthy, peaceful world. It is structured as a 50 year business and governance model for massive transformation to a thriving civilization

THC envisions a society where conscious evolutionaries are empowered to build a harmonious, technologically advanced future. This vision involves providing foundational support such as basic income, eco-homes, and retirement plans to enable these individuals to focus on creating new governance and economic models.

The plan is to establish prototype governance and financial systems within existing cities and eco-regions, demonstrating how a society centered on holistic well-being can function. A globally recognized digital currency will facilitate regenerative wealth through nurturing spirit, art, ecology, community, and well-being. Education and careers will focus on personal and cultural development, providing pensions and retirement care.

The strategy is a phased approach to achieve this vision within 50 years:

1. Prototype Gaian Systems: Implement fully functioning systems in 3-5 cities or eco-regions, leveraging grants and donations.
2. Build a Supportive Network: Create small pods of global co-creators who support and strategize for the collective vision, becoming paying members.
3. Fund the Movement: Establish profitable businesses and impact investments to finance development and governance,



starting with simple ventures and expanding to complex endeavors.

4. Bridge People Over: Promote the system beyond initial co-creators, working with companies to accept Gaian currency (SEEDS).
5. Become Mainstream: Achieve widespread adoption as people and institutions recognize the system's superior outcomes and demand its practices. financial expertise to scale these efforts globally.

This project was birthed through the World Unity Week convergences and is growing in support and recognition. Kara is mentoring with Dan Spinner of Biofield Abundance to develop a new fund to support this work. Funding this movement will be a priority for 2024.



## METAAL KATHEDRAAL / ECOLOGICAL SOCIETY NETHERLANDS

Natascha van den Ban is a member of the Art Council Metaal Kathedraal and part of the core team of the [Ecological Society Netherlands](https://www.ecologicalsociety.nl/). A movement launched in 2021, visible, experienceable and deeply rooted in and around Metaal Kathedraal (Metal Cathedral) in Utrecht, the Netherlands. The Metaal Kathedraal is a sanctuary, podium, meeting place and workplace for art, science and social design that develops in the midst of society. A leader and expert in imagining circular life. Initiated in 11 years from an artist collective who believe in a world in which everything and everyone can flourish.

With a deep belief in the creative and self-healing capacity, a regenerative society is built from this place in practice. Including a regenerative health and knowledge center based on the power, knowledge and skills of nature. A workplace of and for the youngest generations where various labs are being built together that function as work and learning places for all ages. Accessible with high-quality expertise to strengthen a regenerative movement. Ecological Society Netherlands is an actively connected network that is committed to achieving a regenerative, balanced future with each other and nature. All actions are nourishing for the earth and our own living environment.

Within a team of innovators, Natascha has contributed to the formulation of principles and working methods: from the heart, in connection with nature and the eco- and life systems we are part of. She also actively contributes to a cultural, educational and participatory program.

The co-creative and pragmatic character is valuable and retains its value. This vital, physical place makes the difference in giving hope and perspective – in the Netherlands and beyond. That is why The Hague Center is a proud partner. With great thanks to Anne-Marie Voorhoeve, this movement is also supported by the Club of Budapest.

## COHERE+

In 2022, THC received funding from the European Union for 'Cohere+', a research and education project in partnership with: Life Itself (France), the Institute for Integral Studies (Germany), Emerge (Germany), and the Ekskåret Foundation (Sweden).

The purpose of this 3-year project is to uplevel the collective capacities of European change agents and learn together how to transform 'metacrisis', moving together towards a regenerative, cohesive, and healthy Europe. Our focus is on the field of 'transformational' change agents in Europe: those who can be identified as taking whole-systems, integrative approaches towards paradigmatic societal transformation. Cohere+ combines research, events, technology development, and educational offerings in order to map the European 'transformational change' field, engage with agents to build community and coherence within the field, and develop the collective capacities of change agents across Europe to co-create regenerative systems and societies.

The overall objectives of the Cohere+ project are:

- To increase and enhance the self-knowledge and self-awareness of key actors and organisations in the European transformational social change field, so that the field is more





visible to itself and its effectiveness in strategic alignment is improved;

- To support and facilitate greater connections and more effective transdisciplinary and transnational collaborations within the field;
- To increase the visibility and accessibility of the field to broader European society so as to increase participation and boost its potential for impact;
- To educate change agents and citizens within and beyond the field, to build the field's spheres of influence and thus leverage our collective power to co-create the future Europe we want to live in.

THC was the lead applicant for this project, and is managing the project together with IFIS.

THC co-creators for this project are Andrea Harding and Bret Warshawsky of Symphonics and Claudine Villemot-Kienzle.

In 2023 and 2024 the team met regularly and attended the Inner Development Goals Summit in Stockholm Sweden.

## COHERENET

One of the deliverables for Cohere+ was an interoperability framework for collecting data about people and organizations. That framework evolved into a project of its own: CohereNET.

This project was initiated by Pieter, together with Andrea Harding of Symphonics and Wendy Ellyatt of the Flourish Project,

Most global movements and projects aiming for systemic change lack coordination, particularly in data mapping and sharing across diverse disciplines and sectors. This fragmentation leads to unawareness of others' efforts, duplication of efforts, lost collaboration

opportunities, increased costs, and reduced impact.

CohereNET addresses these issues by fostering partnerships through shared agreements. The project's initial focus is to develop a shared use case to demonstrate its viability, paving the way for formal partnerships and co-creative funding.

CohereNET's holistic design encompasses Data Management, Social, Logistical, and Technological aspects, separating governance of data, technical, and publishing dimensions to leverage partners' expertise and avoid entanglement. Organizationally, it operates on an all-win partnership model, with no single core driver or beneficiary, ensuring all parties thrive through cooperation.

The initiative features a distributed data repository, facilitated by agreements and protocols enabling databases to communicate.

Data stewards, forming a 'Mappers Network,' focus on specific domains, creating a comprehensive planetary data asset. 'Publisher Partners' in the 'Distribution Network' access and disseminate relevant data, benefiting from improved coordination and data quality. 'Technology Partners' in the 'Infrastructure Alliance' provide solutions for data collection, organization, and distribution, enhancing interoperability.

CohereNET's omniscient partnership model emphasizes win-win agreements, fostering shared stewardship and value exchanges, benefiting all partners financially and operationally while supporting collective goals and celebrating unity in diversity.



## LOVE TO

What if we transitioned from a death economy to a life economy? Renowned author of *Love Money, Money Loves You*, Sara McCrum is bringing a new financial instrument to market, aggregating regenerative work on farms into a token that can be purchased by large companies and mutual funds as part of their CSR assets. Anne-Marie Voorhoeve is supporting the core team to be in coherence and connecting conscious financial investors in the Netherlands with the project.





## PROJECTS 2023-2024

## EMERGENCE

ECOINTENTION - EUROPE  
ENERGETICS PROJECT

THC is a partner in [Help2Heal Europe](#), a project of the Center for ECOintention. Several THC members are [ECOintention](#) practitioners, and Marianne de Jager and Natascha van den Ban are actively involved in the project.

Europe is a living entity, an organism with the Ural Mountains and the Volga River as the eastern border. The southern border goes through the Mediterranean. The islands of the Azores are the most western part, followed by Ireland, Scotland and Norway. The North Cape and the Kola peninsula form the northern border.

The organism Europe consists of thirty-three parts, called holons. The shape of a holon is determined by its geographical location and geological structures in the earth's crust. Each holon has, just like an organ, a special function.

Everything is connected in a living whole.

Quantum mechanics says that everything is energy. Good, flowing energy is the basis for positive development and growth. A system that is in good (energetic) condition has high diversity and complexity. All parts develop towards a higher level.

An energy scan made by the Center for ECOintention shows that most of the holons in Europe have (very) low energy. This has a negative effect on social processes, and all ecological and economic systems.

This was the reason to start Project Europe Energetics. The Project aims to contribute to the healing of Europe with ECOintention and other energetic methods in cooperation with local people.

ECOintention is a method to bring healthy energy and flow into ecosystems and

organizations. It combines modern science with ancient wisdom in a practical method.

ECOintention is the application of Mind over Matter on a large scale.

Center for ECOintention has developed 9 large-scale projects in natural areas with high transformation potential, where energetic balancing could have the most effect on local, national and international level and where healing is needed first to provide Europe as a whole with good energy. These projects - energetic healing systems - are located in:  
*Western Europe:* Wadden Sea (NL-DE), Mols Bjerge (DK), Hondsrug (NL).

*Eastern Europe:* Bialowieza region (PL-BY), Ugra (RU), Dnjepr Reservoir (UA)

*Central Europe:* West Beskiden (PL), Duna Ipoly (HU), Bükk National Park (HU).

In 2023 3 projects were added for development in South East Europe: Popovopolje (BA-HR), Rtanj Mountain (RS), Zumberacka Gora (HR-SI).

We hope a healthy and vital organism Europe will have a positive effect on ecological, cultural, social and economic processes, and will contribute to the well-being of our most valuable ecosystem: Mother Earth.

*(source: Center for ECOintention)*

Marianne de Jager and Natascha van den Ban are doing energetic balancing for one of the national parks in Hungary (Bükk National Park).

DAY OF MINDFULNESS AND  
COMPASSION

Anita Floris holds the space for a Day of mindfulness and heartfulness on July 1st, also known as ketikoti ("the chain is cut" or "the chain is broken"). It is the day that, in 1863, slavery was abolished in Suriname and the Dutch Antilles. The fact that slavery is part of Dutch history is a sensitive subject.

The conversation is often difficult and painful.



By listening deeply to what is alive inside of us when confronted with the role of the perpetrator, rather than that of the victim or the rescuer, we can learn to mature our nervous system. Thereby we can increase our capacity and ability to deal with difficult and painful issues, use our compassion and our heartfulness.

Mindfulness asks us to silently focus our attention on pain and suffering. To use our physical presence both in sitting and in our breathing to face, feel and experience everything that presents itself as thoughts and emotions around the theme of slavery. Although debate and conversation also have their value and their place in this theme, here we ask for quiet attention.

We have several guided exercises on the site, to choose from to find a quiet time on the 1st of July, to sit and pay attention and bear witness.

On July 1st 2023 we organized a meeting through Zoom to guide participants through the meditation and share experiences .

The event was co-created together with the Center for Human Emergence.

## WHOLEWORLD-VIEW

Anne-Marie Voorhoeve is part of the core team of [Whole-World-View](https://www.wholeworld-view.org/) and is actively involved in different DOIT teams of the projects developed.

THC team members have been playing different roles and where possible within THC we have prototyped different frameworks to support further development and possibility for outreach.

In the Fall of 2023 Anne-Marie and Diana Claire, in partnership with Dr Jude Currivan and Rhodri Samuel of WWV continued an exploration and a series of Constellations for the Collective Processes on Activism evolving into Sacred Activism.

Kara Stonehouse has contributed graphic recordings of themes of the Whole World View to focus the energy and meditations during the

seasonal convergences Peace Week and World Unity Week.

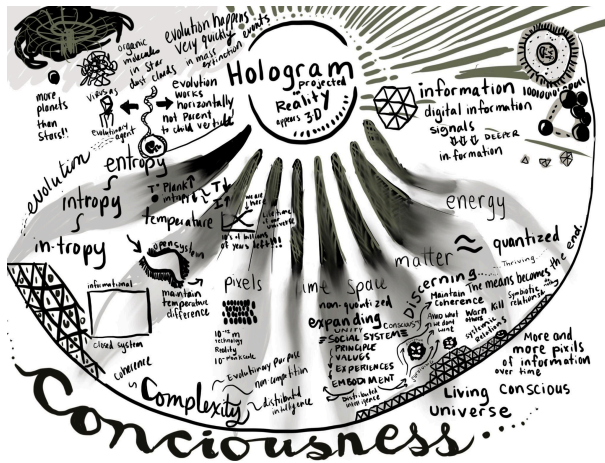


The WholeWorld-View Community was founded by Dr. Jude Currivan and Gil Agnew in 2017, and is a growing interdependent co-operative of global change agents in service to nurturing our personal and collective need for meaning and belonging, celebrating our innate diversity within a unified whole.

Its purpose is to empower the emergence of humanity's conscious evolution through the understanding, experiencing and embodying of unitive awareness.

Based on the book by Jude Currivan,, The Cosmic Hologram and The History of Gaia, the WholeWorld-View message of unified reality provides a foundation and practical perspectives towards global problem solving upon which we can shift our individual and collective values and behaviors to be aligned, and in harmony, with the natural world, and universal and cosmic principles





The WholeWorld-View Community supports and aims to facilitate the transformation of the challenges of our global emergency into the emergence of our conscious evolution.  
(source: WholeWorld-View)

## UNITIVE NARRATIVE

From the earliest times, human beings have shared narratives and told stories to try to understand the nature of the world and our place in it. These stories evolved as we learned more about reality.

Early narratives based on faith, mythology, and metaphysics have been overshadowed by a secular, materialistic paradigm that emphasizes separation and randomness, often justifying conflict and inequality.

By focusing only on the material aspects of the universe, this paradigm misses deeper truths about consciousness and universal relationships, leading to unsustainable behaviors threatening our future.

However, recent scientific breakthroughs are challenging this view, suggesting a unified reality and fostering a new narrative grounded in a sense of unity with all life and the evolutionary flow.

The only narrative that is going to be worth thinking about in the immediate future is one that is talking about the planet and all beings on it. This new narrative will need to be

grounded in widespread unitive consciousness, which includes a felt sense of unity with all life, unity with the ineffable source of all being, and unity with the evolutionary flow.

## A RADICAL GUIDE TO REALITY

THC is an avid supporter of embracing different lenses to see our world and cosmos and give meaning to it, in a way that we recognize unity in diversity. Anne-Marie has been involved with WholeWorld View, and Loving Classrooms to design and launch an education proposal and a movie to advocate for a new collective worldview, that moves us from a perceived separation to a perspective of unity in diversity. It will approach education from the view of our fundamental interbeing; our interconnectedness, interdependence and belonging with our planetary home, Gaia, and the entire Universe.

This honors our rationality by acknowledging science, and it respectfully sees its limitation and the need for including universal love and the Ground of all Being, or Spirit. Without making space for all aspects of us, we will not be able to educate children in a balanced way, that can co-create a love-based, rather than a separation based future.

## LOVING CLASSROOM

[Loving Classroom](#) is an educational programme that provides teachers and students with Positive Relationship Education, guiding teachers and students to cultivate a lifetime of good relationships and eventually also between natures and cultures - building a loving world, where we take care of each other's mental, emotional and physical wellbeing.

We are sad to report that

## STORY OF THE NEW PARADIGM

We have been speaking with Ervin Laszlo and others for a long time, netspirit, Centers of SuperCoherence NOW assembly, Galileo,



wholeworld-view etc. Invited to host book launch.

## THC EGYPT

A community hub, The Together Temple has blossomed in Egypt where the Blue Lotus flower is being symbolically reintroduced to nourish a conscious social movement out of Africa. More than a social enterprise, the vision of this groups is to transform consciousness as we prototype new currencies and governance structures.

Drawing on a new world view and the principles of living systems, the motherfund moves beyond our current concepts of economics and social organization and offers a fresh way to share and regulate resources, interrelate, develop innovations, realize ourselves and co-ordinate our intelligence.

THC's Mona Rabie and Aansan Yeh are developing and prototyping a 'Mother Fund' that empowers conscious co-creators to realize wholesome wellbeing as well as their gifts and innovations for a thriving world.

## THE HAGUE CENTER FOR FIELD INQUIRY

The Hague Center for Field Inquiry (THC.FI), was founded by Diana Claire Douglas and Anne-Marie Voorhoeve.

It is a unique organization that explores complex questions and challenges through a phenomenological method of systemic constellation work. This approach involves using a powerful tool for serving all life and humanity's evolution, applying findings to inform strategy, design, and decision-making, and developing new tools, frameworks, and innovations for a regenerative world.

The inquiries we do inform THC and partners on many vital issues, opening new possibilities and perspectives.  
An overarching question is "What will it take for

Humanity to be in its rightful place in the flow of Love and Life?"

From THC.FI's inception, Anne-Marie and Diana Claire have envisioned having a team of experienced Representatives who volunteer to participate in the deep inquiry constellations. There is now a list of over 30 people who are ready to be Representatives.



Diana Claire is meeting with researchers both Constellators and others, asking questions such as "What is research?" "What is the value of having a Center for Field Inquiry?" The results of these and other processes will inform us as to whether THC.FI becomes a holon of THC or is a brand of THC.

Diana Claire and Anne-Marie have been building partnerships for systemic constellation inquiry and research with Georg Muller-Christ and his PhD students of Bremen University Business School; Jude Currivan and the WholeWorld View; Irene Nooren and Holistic Blueprint Society.

In 2022-23 Anne-Marie hosted and Diana Claire facilitated a series of Constellation with Jude Currivan, Rhodri Samuel and WholeWorld-View and the Unitive Narrative, starting with "What does Unity-in-Diversity and Gaia want us to know about Activism now?" This series evolved into constellations on Unitive Justice, Unitive Economics. This inquiry continues,

Systemic Constellation Work Experiments continue in The Conscious Witness Project. Researchers Diana Claire, Judy Wilkins-Smith, Peter Stefanyi.



In 2022-23 Diana Claire and Anne-Marie co-facilitated a number of Collective Constellations with partners: LOVETO in Europe, Bright Greens, LOVETO + Investors, and GAIA (Global Artificial Intelligence Association), Bridging Continents, and Divine Mothers' Love

Anne-Marie and Diana Claire continued their involvement in Bridging Continents Council, in Europe and in North America. Through this connection they were invited to join Divine Mothers' Love, Unifying Humanity, stewarded by Grandmother Ejna Fleury.

For World Unity Week 2023 THC.FI hosted the Unitive Justice Room asking the question What does Unitive Justice want us as Humanity to know right now? Deeply rooted in understanding we are One with Earth Life and Cosmic Life and as part of manifesting the Unitive Narrative (the New Story), it is our intention to explore Justice as it emerges into Unitive Justice through several perspectives and processes. We will listen deeply to the Field, listen to Grandmothers and Wisewoman, experience the Archetypes of Justice, Walk the Spiral of Spiral Dynamics, connect with Truth and Justice for the highest good of the Whole.

For Enlightening Our Way in December 2023, THC.FI hosted the Unitive Justice and Economics Room offering three Constellating for the Collective events: "Unitive Economics: Seeking Guidance from the Field for Regeneration and Peace" with Dr Jude Currivan, Rhodri Samuel; "Walking the Spiral as Economics" with Diana Claire + Anne-Marie ; "Becoming and Being a Conscious Witness in a Collective Field" with Diana Claire + Anne-Marie.

## THE SCIENTIFIC AND MEDICAL NETWORK CONFERENCE

*Evolutionary Visions of the Future* at The Scientific and Medical Network conference was

held on 20th March 2021. Anne-Marie was one of the speakers. The work and mission of the Scientific and Medical Network and that of THC are aligned in our mutual desire to harmonize heart and head, subjective and objective.

The Scientific and Medical Network (SMN) is a worldwide professional community It promotes a greater acceptance of the human being's spiritual essence, as consistent with science. The network grew into a group of 950 members of scientists that support "open-minded, rigorous and evidence-based inquiry into themes bridging science, spirituality and consciousness".

Part of this inquiry has been published in the Galileo report

## HOLOMOVEMENT

Inspired by David Bohm's philosophy merging scientific and spiritual understandings of the universe, the Holomovement is a movement of movements with a voice that can reach the mainstream. Emanuel Kuntzelman, Laura Rose, Mariko Pits, Danette Woolpart and the Holomovement core team host an annual conference and community gatherings for thought leaders and pioneers in world changing solutions.

The Hague Center offered pro bono facilitation of the engagement track of the Sedona conference in 2023. THC continues to strategically connect to changemakers and host the European Holon.

## GOVERNANCE AND ORGANIZATION THC





## ROLE OF THE BOARD

The role of the board is to uphold our legal status as a charitable foundation in the Netherlands in line with the vision developed in THC Core.

The board consists of a chair, a treasurer and a secretary. The role of treasurer and secretary can be fulfilled by one person. The board members are appointed for an indefinite period. The directors receive no remuneration for their work.

The board of the THC consists of:

Chair: Anne-Marie Voorhoeve

Secretary: Anita Floris

Treasurer: Marianne de Jager

